

Nautica Sea World 34 CABIN

Type:	Motorboat
Year built:	2010
Material:	Fiberglass
Motorization:	2x VM (320 PS Diesel)
Milage:	280 h
Transmission:	Wave
Speed:	No description
Max. speed:	No description
Length:	10,65 m (34,9 ft.)
Width:	3,04 m (10,0 ft.)
Draft:	1,10 m (3,6 ft.)
Weight:	7.500 Kg (16.535 Lbs.)
Fuel tank:	850 L
Water tank:	190 L
Cabins:	2
Beds:	4
Bathrooms:	1
Anchored at:	Sardegna
Price:	107.170 GBP VAT included



Description:

2010 - mt. 10.65 x 3.04 - 2 x 320 Hp VM - Sea World is an uncompromising boat - The hull is fantastic and very safe, efficient engine and is a comfortable boat and very practical and well built - 4 beds - very well equipped and kept in good conditions - craft quality higher than average - gateway into three components with full opening - kitchen with 2 gas burners, refrigerator 90 lt. and sink - interior dunnage mahogany slatted - forward cabin with central double bed - guest cabin double bunk - bathroom with shower - magnetic compass and engine instruments - ecosonda 1 Kw 50-200 Hz - 4K Autopilot - GPS - plotter Lorenz 11 \\\\\" - 2 kw radar 24 mg. - vHF DSC 25W - bow Lewmar 2.7 kW - electric toilet with macerator and black water tank - boiler - 12/220 volts with 4 batteries and rectifier - 3.5 Kw generator Bluetek 40D 100 hours - Webasto heating - teak cockpit - internal and external sealed LED - aft shower mixed lighting - electronic single lever throttles - fiberglass and teak swim platform - wipers pantograph - electrical outlets 12/220 in all environments - in camera closed circuit - electric searchlight

Technical equipment:

Heating, CD, Water pressure system, Hot water system, Holding tank, Generator, GPS plotter, Radar, Auto pilot, Depth sounder, Microcommander, Compass, Fish finder, Teak deck, Bathing platform, Ceramic cooktop, Refrigerator, Shore supply, Anchor windlass, Bow thruster



Outside view - Image 1



Outside view - Image 2



Outside view - Image 3



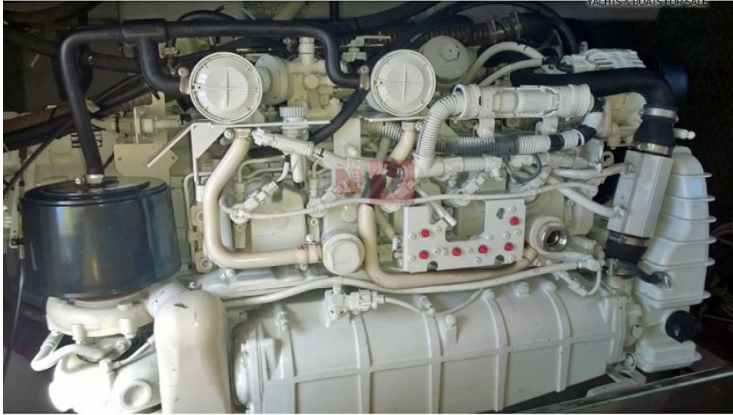
Outside view - Image 4



Outside view - Image 5



Outside view - Image 6



Outside view - Image 7